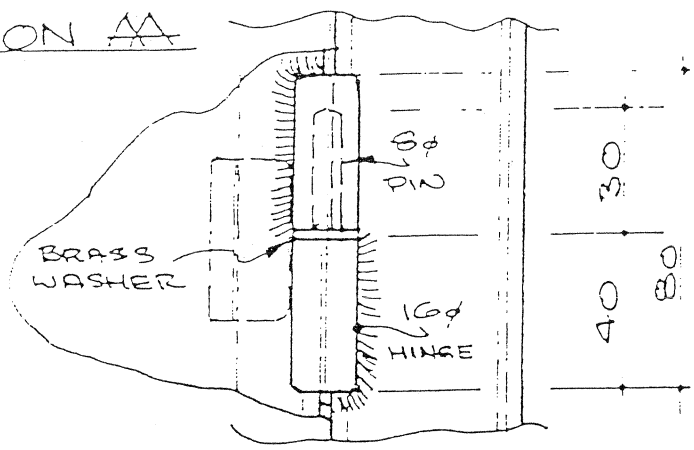


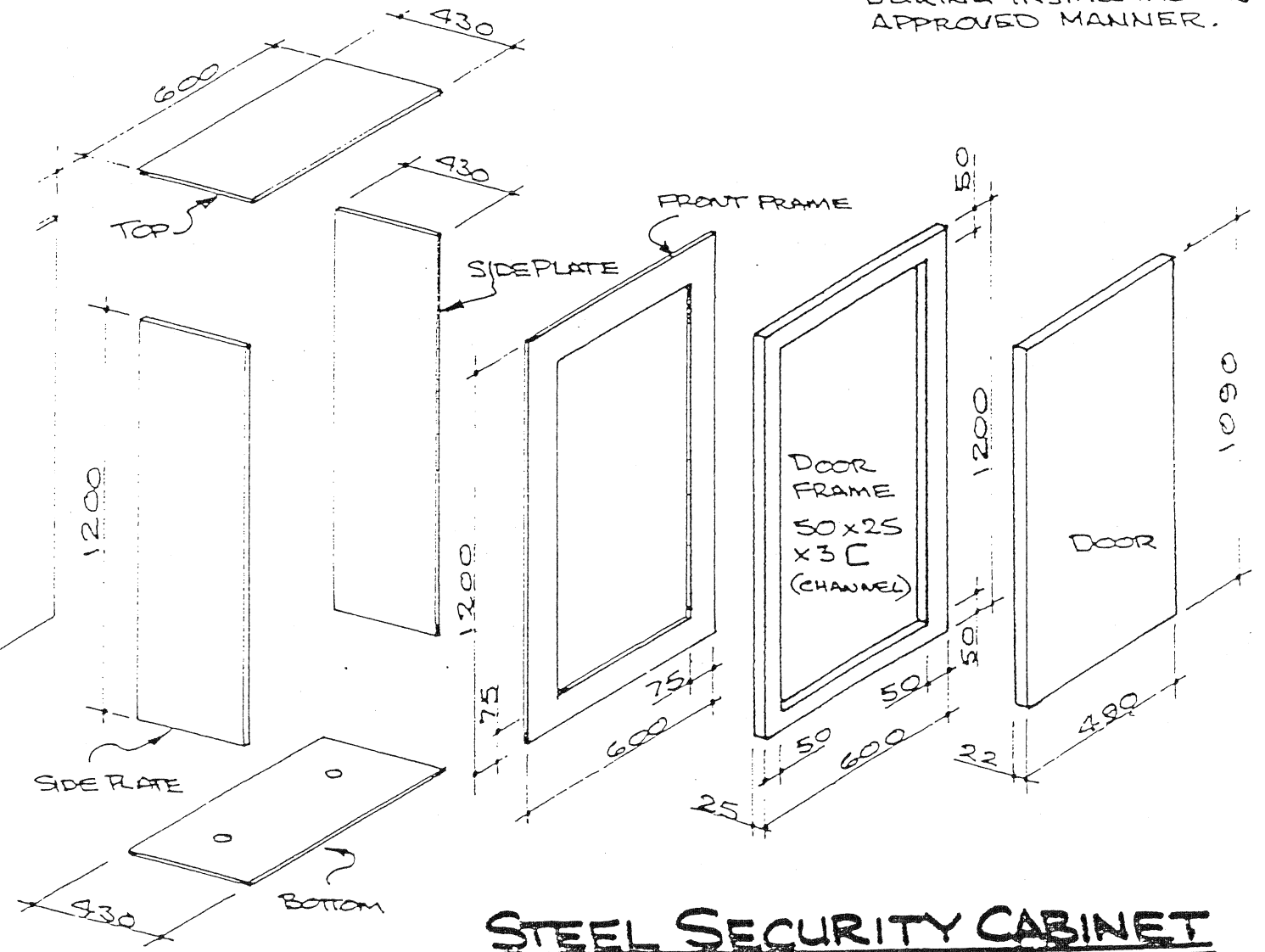
SECTION AA



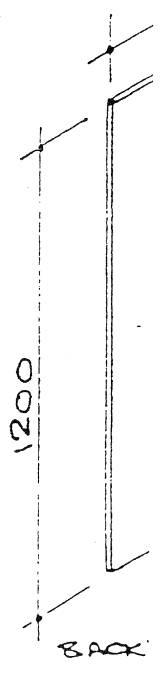
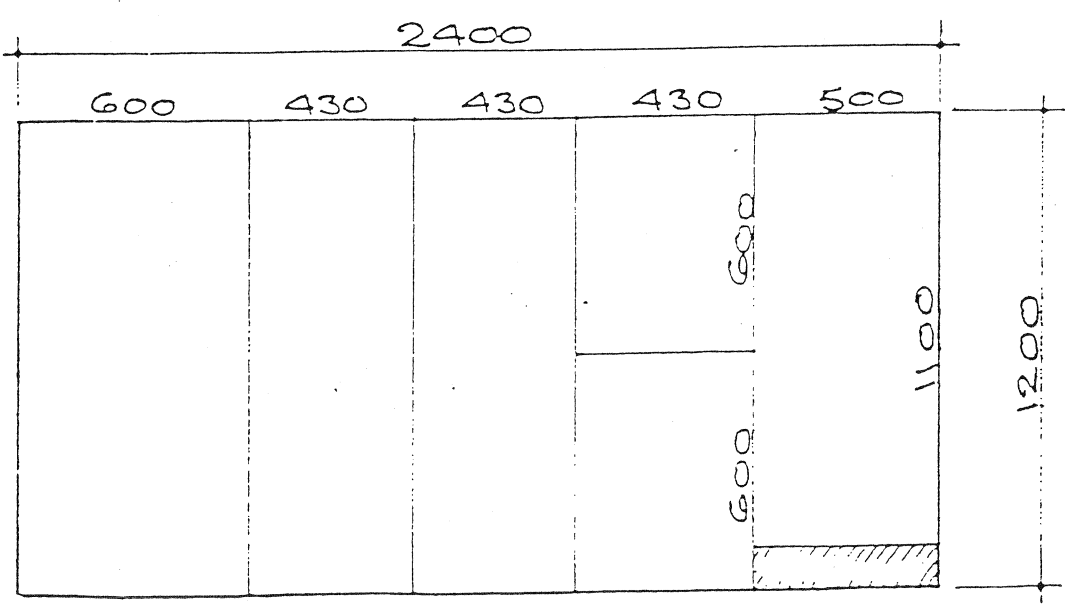
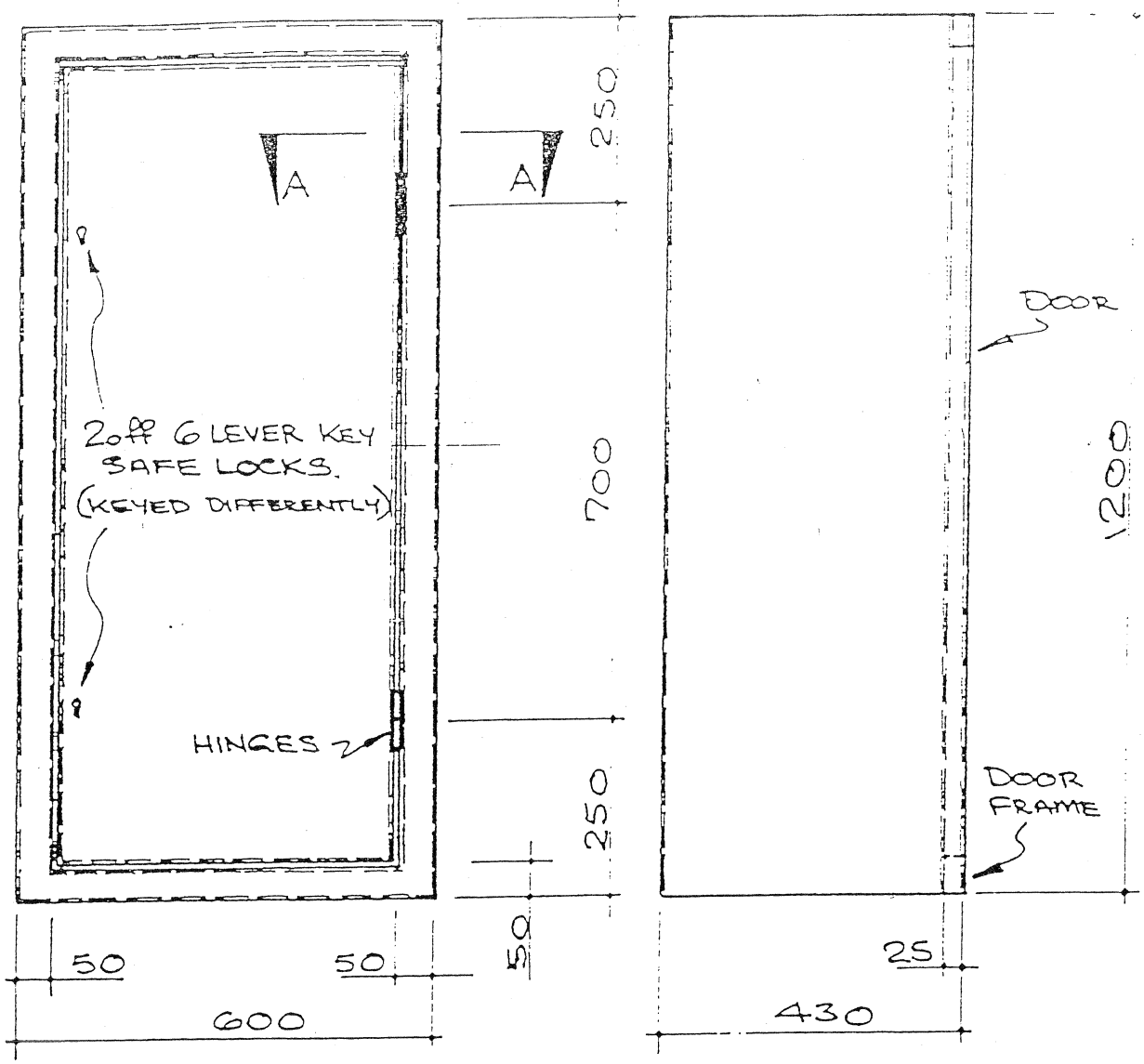
DOOR HINGE DETAIL

NOTES!

- 1/ ALL MATERIAL USED SHALL BE GRADED TO BS4360-43A or EQUIVALENT.
- 2/ ALL WELDS SHALL BE CONTINUOUS AND HAVE A MINIMUM LEG LENGTH OF 6mm.
- 3/ ALL WELDS SHALL BE WIRE BRUSHED CLEAN.
- 4/ ALL SURFACES SHALL BE ETCH PRIMED (2 COATS) BEFORE TOP COATING.
- 5/ ANCHOR BOLT HOLES ARE TO BE LOCATED AND DRILLED FOR M12 (2 off) MINIMUM, DURING INSTALLATION IN APPROVED MANNER.

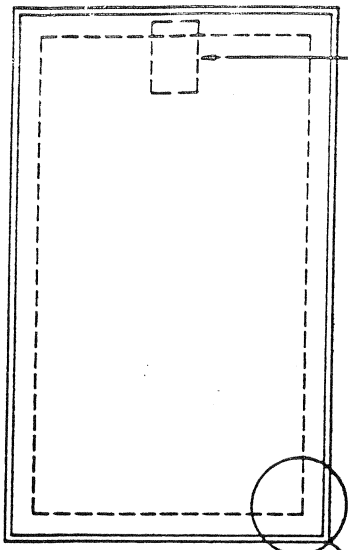


STEEL SECURITY CABINET



STD 2400x1200 x 6mm RATE M/S

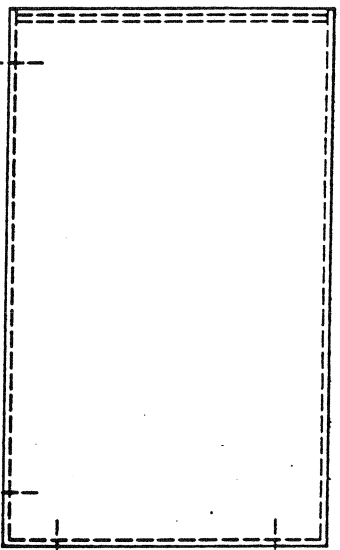
FRONT ELEVATION



DEADLOCK OF AT LEAST 5 LEVERS TO BRITISH STANDARD FOR THIEF RESISTING LOCKS

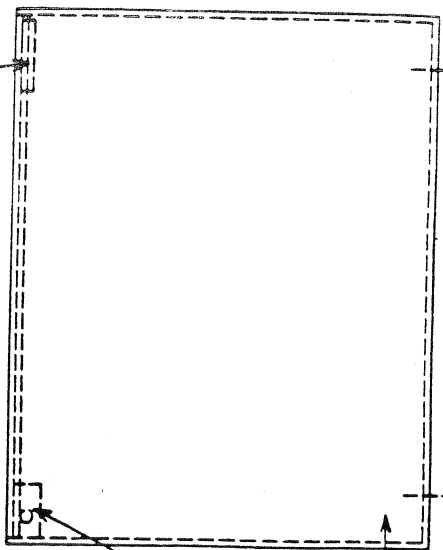
STRAPPING BEHIND LOCK/FILLET WELDED TO AVOID VULNERABILITY.

SIDE ELEVATION



BASE MOUNTING HOLES

PLAN



DOGGING ANGLE TYPE INTERNAL HINGE AS FURTHER ANTI-DRIVE

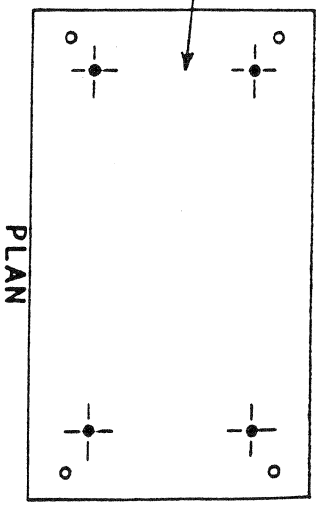
ANTI-DRIVE COMPONENTRY DOOR NOT SHOWN FOR CLARITY

HORIZONTAL & VERTICAL CLASHING BARS OF AT LEAST 20x6mm HS FLATS WELDED INSIDE AND AT CORNERS

4 STUDS HIGH TENSILE WELDED TO 6mm PLATE

BACK/BASE MOUNTING PLATE

ELEVATION



PLAN

INSTALLATION NOTES:

1/ TO WOODEN STUDS: TO 6mm STEEL MOUNTING PLATE AS SHOWN ABOVE.

2/ TO CONCRETE STRUCTURE: DYNA BOLTS IN LIEU OF MOUNTING PLATE.

3/ WHERE PRACTICABLE CABINET SHALL BE FIXED TO FLOOR AND WALL.

FIREARMS CABINET CONSTRUCTION DETAILS

SHEET 1 OF 2 SHEETS C2191

